

# 12 Heritage

**Indigenous and Non-indigenous Heritage Impacts** – the EA shall include an assessment of indigenous and non-indigenous heritage values that may be impacted by the Project with details on subsurface archaeological investigations undertaken for potential archaeological deposits. The assessment must address the information and consultation requirements of the draft *Guidelines for Aboriginal Cultural Heritage Assessment and Community Consultation* (DECC, 2005).

This chapter outlines the assessment of indigenous and non-indigenous heritage items that may be impacted by the Project. The assessment indicates that certain sites may be impacted by the Project. However, these would be addressed prior to construction, in accordance with the recommendations contained in the specialist heritage report (Appendix G).

In 2003, Navin Officer Heritage Consultants undertook heritage surveys and assessments across the majority of the study area, as well as some surrounding areas. In 2008, the consultants prepared further studies for Neighbourhood 1 (NH1A) of the Googong township and, in 2009, for areas related to the Project that were not previously studied. Heritage assessments and consultation were undertaken in accordance with relevant guidelines of the Department of Environment, Climate Change and Water (DECCW).

## 12.1 Scope of the heritage assessment

The heritage assessment has considered the specific potential impacts of infrastructure elements associated with Stage 1 of the Project, and the potential impacts of the concept plan.

### 12.1.1 Assessment of Stage 1

The heritage assessment primarily details the potential impacts that could result from the construction of Stage 1 of the Project, as the infrastructure has been designed to sufficient detail to allow consideration of specific sites.

This assessment must be considered in the context of heritage studies being undertaken in accordance with the Part 4 development application for NH1A, as the subdivision also has the capacity to potentially impact the same heritage features identified in this chapter.

### 12.1.2 Assessment of the concept plan

Future assessments under the EP&A Act, potentially under Part 3A project application(s) or Part 4 development applications, would need to be undertaken for elements of the concept plan that are not part of Stage 1 of the Project.

In terms of potential heritage assessments, these future studies would need to consider:

- The potential impacts of mains pipework within neighbourhoods 2, 3, 4 and 5 (refer to Figure 5.1 for the indicative pipework routes). While the current study identifies that there are unlikely to be any significant impacts as a result of the Project, future studies should include an assessment of:
  - The heritage features previously identified, as shown in Figure 12.1.
  - The context of the pipework in relation to the developing urban landscape of the Googong township and the impacts of the road network with which the pipelines would be associated.
- The specific locations of sewage pumping stations 3 and 4, once these are determined, as well as any other sewage pumping stations or other water cycle infrastructure that may be required.

## 12.2 Assessment methodology

---

A literature and database review was undertaken for the study area and surrounding areas. This was used to place the study area within an archaeological and heritage management context, identify the locations of previously recorded heritage sites, and predict the locations of potential sites. Sources included local histories, archaeological reports for the area, and the following heritage registers and schedules:

- Australian Heritage Council – National Heritage List, Commonwealth Heritage List and the Register of the National Estate.
- NSW Heritage Office – State Heritage Register and State Heritage Inventory.
- Heritage Schedule(s) from the Queanbeyan LEP (Googong) 2007.
- Register of the National Trust of Australia.

## 12.3 Indigenous heritage consultation

---

### 12.3.1 Consultation associated with the original Googong township assessment (2003)

There are two Aboriginal community groups that have an interest in heritage issues in the country in which the Googong study area is located. They are:

- The Buru Ngunawal Aboriginal Corporation (BNAC) based at Dunlop, ACT.
- The Ngunnawal Elders Council Incorporated/Ngunnawal Local Aboriginal Land Council (NLALC) based at Queanbeyan.

Both groups were contacted prior to the field survey and a representative was invited to participate in the fieldwork. Subsequently, Mr Wally Bell (BNAC), Mr Arnold Williams and Mr Percy Williams (NLALC) participated in the survey.

### **12.3.2 Consultation associated with Neighbourhood 1A and 1B of the Googong township assessment (2008)**

Notification of heritage assessments were sent to the NLALC, the Registrar of Aboriginal Owners, Native Title Services, Queanbeyan City Council (QCC) and the (then) Department of Environment and Climate Change (DECC) (now the DECCW).

In February 2008, a notice was published in *The Canberra Times* and *The Queanbeyan Age* inviting registration from interested Aboriginal parties. A reply was received from the Registrar of Aboriginal Owners stating that there were no Registered Aboriginal Owners over the subject land. Expressions of interest were received from:

- The DECC.
- The NLALC.
- The BNAC.
- The Bega Traditional Aboriginal Elders Council Inc on behalf of the Traditional Ngarigo Elders (TNE).

Two other local groups were contacted and informed about the project. These were:

- The Consultative Body on Land Development and Artefacts in the Ngunnawal Area (CBLDA).
- The Ngarigu Currawong Clan (Ngarigu).

On 11 June 2008, an Aboriginal focus group meeting was held, at the offices of Navin Officer Heritage Consultants in Canberra. Representatives of the five Aboriginal groups were invited to attend the meeting. The meeting was attended by Jim Andriopoulos (NLALC), John Dixon (TNE), Tony Boye, Ellen Mundy and Allen Harrison (Ngarigu), Kerry Navin and Kelvin Officer, and Mike Nolan (CIC).

Outcomes of the meeting included:

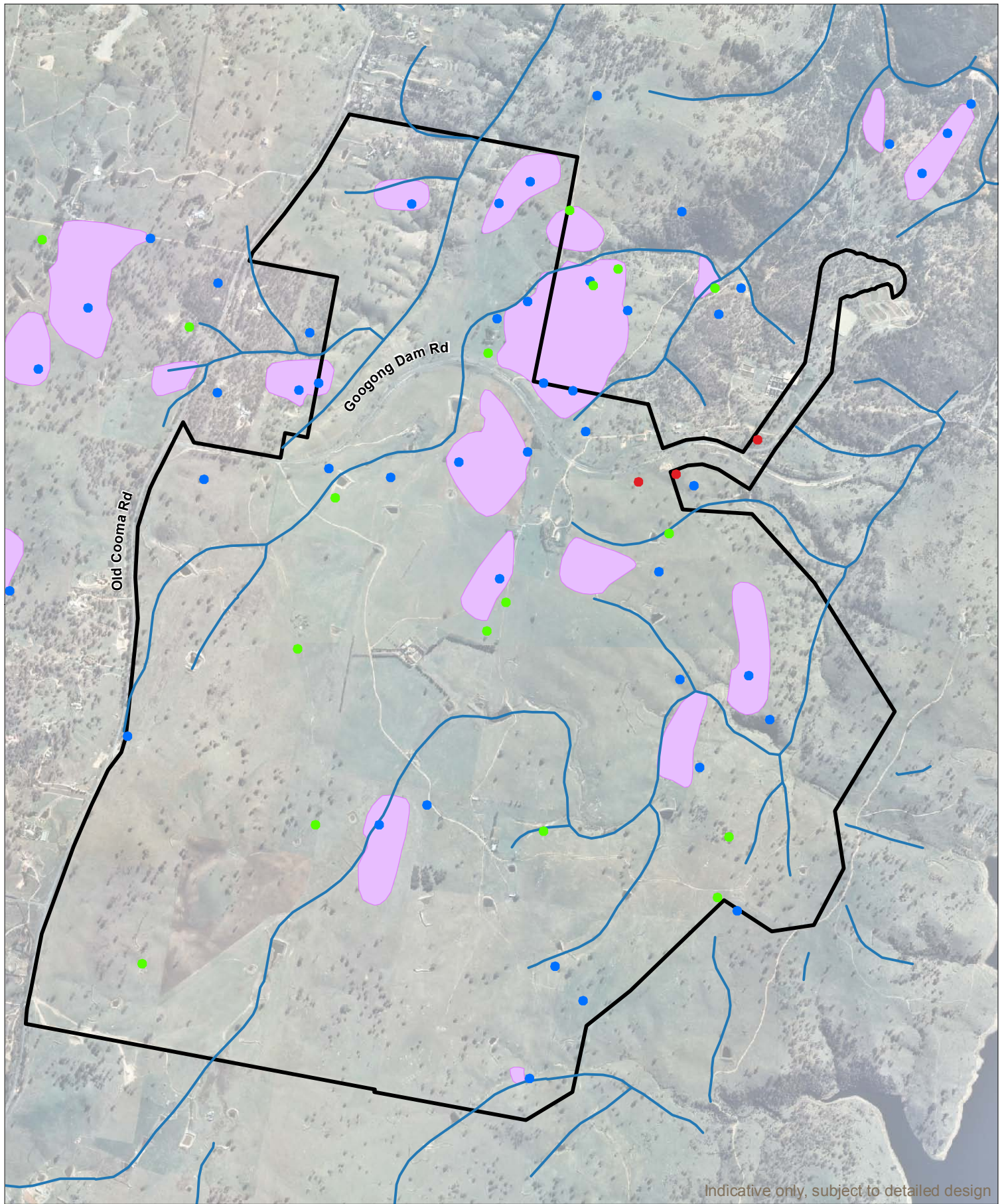
- Agreement to form an Aboriginal focus group that would be consulted about, and provide input to, the Project. This would facilitate constructive and positive participation in the Project.
- Agreement to conduct a preliminary field visit to familiarise the stakeholders and nominated elders with Neighbourhood 1A and 1B (refer to Figure 1.3 for their respective locations on the Master plan).

### **12.3.3 Consultation associated with additional studies (2009)**

Five Aboriginal organisations were contacted and engaged by CIC to participate in field surveys for the Project, conducted in June 2009. The representatives were:

- Wally Bell (BNAC).
- Tina Williams (King Brown's Tribal Group).
- Joe House (Little Gudgenby River Tribal Group).
- Geoffrey Murray (NLALC).
- Ross Thomas (Yukembruk Merung (Ngarigo Consultancy Pty Ltd)).

The identified Aboriginal groups were sent a copy of the report on 16 April 2010 with a request to comment on its findings. Further details regarding the Aboriginal participation and consultation can be found in Appendix G.



Indicative only, subject to detailed design

**Googong Environmental Assessment**

**Proponent** CIC Australia

**Date** 20 August 2010

**Drawing no.** 08003g\_ea\_fig12-1

**Source** Navin Officer Heritage Consultants

- Indigenous site previously recorded
- Non-indigenous site previously recorded
- Indigenous site recorded in current study
- Watercourse
- Potential archaeological deposit (PAD)
- Study area

1:20,000

0 150 300 450 600m



**Figure 12.1** Heritage features – Concept plan

## 12.4 Existing environment

---

Existing indigenous and non-indigenous heritage items and objects have been categorised into site locations. A site is defined as any material evidence of either past indigenous or non-indigenous activity that remains within a context or place, which can be reliably related to that activity. Figure 12.1 shows the indigenous and non-indigenous heritage features that have been identified within the study area.

### 12.4.1 Indigenous sites

Most indigenous sites are identified by the presence of three main categories of artefacts:

- Stone or shell artefacts situated on or in a sedimentary matrix.
- Marks located on or in rock surfaces.
- Scars on trees.

Frequently encountered site types around the study area include stone artefact situations. They may consist of:

- Single stone artefacts (often described as isolated finds). An isolated find is one that is not located within a rock shelter, and occurs without any associated evidence of indigenous occupation within a radius of 60m. It may be indicative of random loss or deliberate discard of a single artefact, the remnant of a now dispersed and disturbed artefact scatter, or an otherwise obscured or subsurface artefact scatter.
- A distribution of more than one artefact (often described as an artefact scatter). Artefact scatters are situated within an open context, no more than 60m away from any other constituent artefact.
- A subsurface artefact distribution (when dealing with an archaeological deposit).

Both isolated finds and artefact scatters have been identified within the subject site.

### 12.4.2 Non-indigenous sites

Surveys have been conducted to determine the number of non-indigenous sites within the study area. Three previously recorded non-indigenous heritage sites are located within the subject site.

## 12.5 Significance assessment

---

### 12.5.1 Indigenous heritage

Generally, Aboriginal archaeological sites are assessed using five potential categories of significance:

- Significance to contemporary Aboriginal people.
- Scientific or archaeological significance.
- Aesthetic value.
- Representativeness.
- Value as an educational and/or recreational resource.

However, a site may be significant according to several of the categories listed above and the exact criteria used will vary according to the nature of and purpose of the evaluation. Therefore, the cultural significance is not a fixed assessment and may vary with changes in knowledge and social perceptions.

The cultural significance of a place can be usefully classified according to a comparative scale, which combines a relative value with a geographic context. In this way, a site can be:

- Of low significance if it is within a local context.
- Of moderate significance if it is within a regional context.
- Of high significance if it is within a national context.

This system provides a means of comparison between and across places. However, it does not necessarily imply that a place with a limited sphere of significance is of lesser value than one of greater reference.

The assessment of the indigenous heritage items within the study area has used this methodology to classify sites into low, moderate or high significance, at a local and regional level.

### **12.5.2 Non-indigenous heritage**

The following heritage assessment criteria are those set out for listing on the State Heritage Register. In many cases sites will be significant under only one or two criteria. The State Heritage Register was established under Part 3A of the *Heritage Act 1977* (as amended in 1999) for listing of items of environmental heritage that are of state heritage significance. Environmental heritage means those places, buildings, works, relics, moveable objects, and precincts, of state or local heritage significance.

An item is considered to be of State (or local) heritage significance if, in the opinion of the Heritage Council of NSW, it meets one or more of the following criteria:

- The item is important in the course, or pattern, of NSW' cultural or natural history (or the cultural or natural history of the local area).
- The item has strong or special association with the life or works of a person, or group of persons, of importance in NSW' cultural or natural history (or the cultural or natural history of the local area).
- The item is important in demonstrating aesthetic characteristics and/or a high degree of creative or technical achievement in NSW (or the local area).
- The item has strong or special association with a particular community or cultural group in NSW (or the local area) for social, cultural or spiritual reasons.
- The item has potential to yield information that will contribute to an understanding of NSW' cultural or natural history (or the cultural or natural history of the local area).
- The item possesses uncommon, rare or endangered aspects of NSW' cultural or natural history (or the cultural or natural history of the local area).
- The item is important in demonstrating the principal characteristics of a class of NSW' (or the local area's) cultural or natural places or natural environments.

An item is not to be excluded from the State Heritage Register on the ground that items with similar characteristics have already been listed on the Register. Only particularly complex items or places will be significant under all criteria. In using these criteria, it is important to assess the values first, then the local or State context in which they may be significant. Different components of a place may make a different relative contribution to its heritage value. For example, loss of integrity or condition may diminish significance. In some cases it is constructive to note the relative contribution of an item or its components. The assessment also involves the classification of sites into low, moderate or high, at a local and regional level.

Indigenous and non-indigenous heritage features that could be affected by Stage 1 of the Project are described in Table 12.1. Previously recorded indigenous sites have the prefix 'GA', indigenous sites recorded in the 2009 study have the prefix 'GWTP'. Each site has been classified as low, moderate or high significance based on the significance criteria outlined above, at both a local and regional level. Note that no non-indigenous heritage sites are with close proximity to infrastructure associated with Stage 1 of the Project.

**Table 12.1** Summary of heritage sites – Stage 1 of the Project.

Site ID	Description	Local significance	Regional significance
GA7	Artefact scatter	Low–moderate	Low
GA27	Isolated find	Low–moderate	Low
GWTP1	Artefact scatter	Low	Low
GWTP2	Artefact scatter	Low	Low
GWTP3	Artefact scatter	Low	Low
GWTP4	Isolated find	Low	Low

Three potential artefact deposits (PADs) were also identified within the study area, identified as PADs 16, 17 and 18. Their locations are shown in Figure 12.2. A recently completed extensive archaeological subsurface testing program of these PADs and two additional PADs identified within the overall study area found that the areas tested are representative of the overall study area and therefore no further Aboriginal archaeological excavation is required within Stage 1 of the Project. SoC H2, relating to stop work policies in the event of finding unknown artefacts would also be enforced.

Figure 12.2 shows the approximate locations of these sites and Appendix G provides details of the results at each of the sites.

## 12.6 Construction impacts and mitigation measures

### 12.6.1 Impact assessment

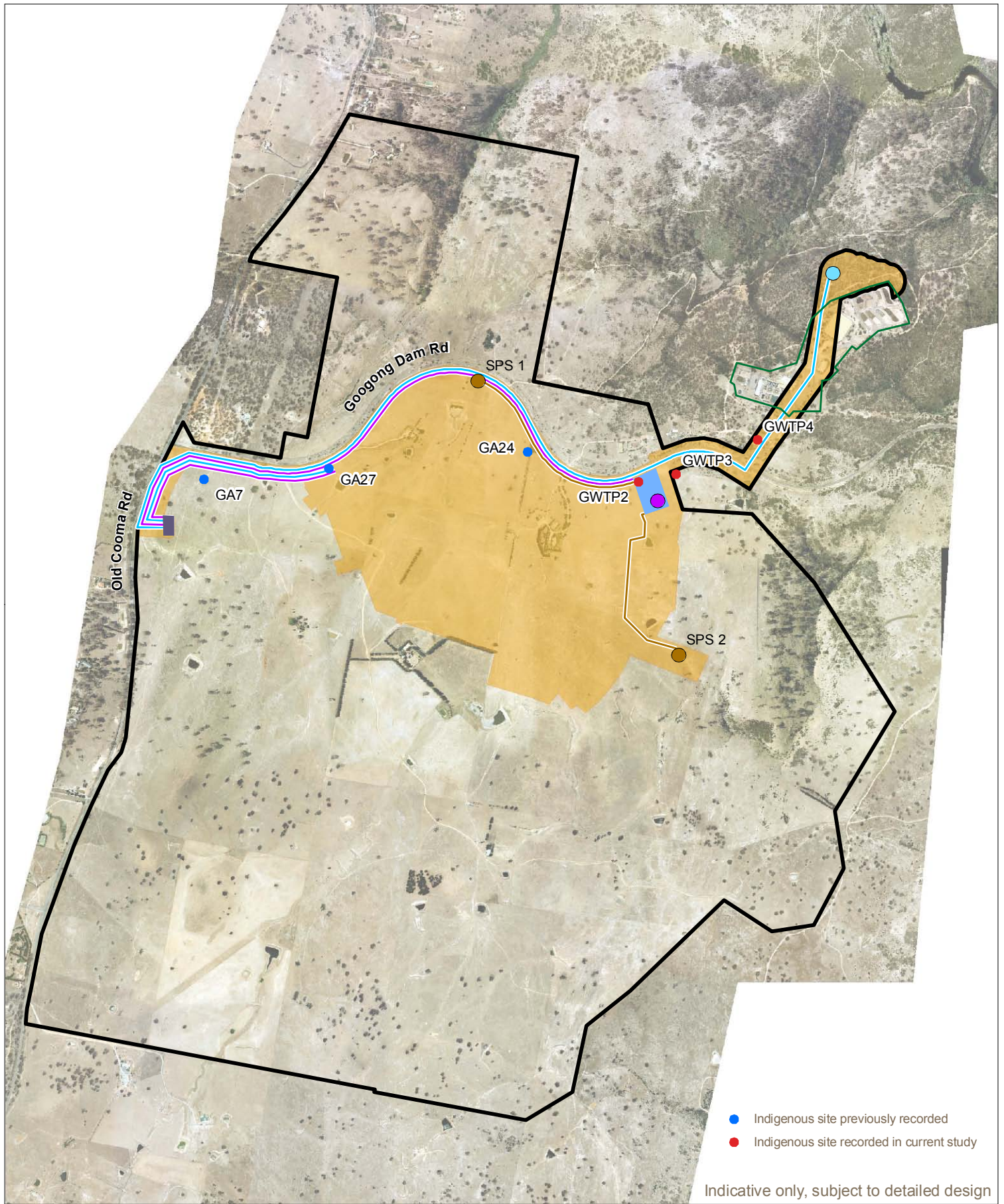
The main impact relevant to non-indigenous and indigenous heritage sites is the potential to disturb identified sites during construction. Disturbance would involve any activity interfering with the existing artefact arrangement of the site through activities such as trenching, clearing of vegetation, establishment of site facilities, creation and formation of access roads, and bulk excavation.

Potential impacts on identified non-indigenous and indigenous heritage aspects during the construction phase include:

- Potential disturbance to indigenous archaeological sites (GWTP1–4, and GA7 and 27).

Sites GA7 and 27, and GWTP1 and 4 are located close to the proposed pipeline. Therefore, any potential disturbance would be related to trenching and laying of pipework. These sites have been noted in relation to the design layout and all measures would be taken to avoid the sites during trenching.

Sites GWTP2 and 3 may be affected by the construction of the water recycling plant and/or pipeline. The location of GWTP2 would be noted in relation to the design layout of the water recycling plant and all measures would be taken to avoid the sites during construction.



**Googong Environmental Assessment**

**Proponent** CIC Australia

**Date** 20 August 2010

**Drawing no.** 08003g\_ea\_fig12-2

**Source** Navin Officer Heritage Consultants

- Bulk water pumping station
- Recycled water pumping station
- Sewage pumping station
- Potable water mains
- Recycled water mains
- Sewage mains
- Existing ACTEW Googong water treatment plant site
- Interim reservoir area
- Water recycling plant
- Study area
- Subject site

1:20,000

0 150 300 450 600m



**Figure 12.2** Heritage features – Stage 1 of the Project



### **12.6.2 Management and mitigation measures**

As mentioned in Section 12.7.1, all measures would be taken to avoid known sites during design layout of the water recycling plant and pipelines, particularly at sites GWTP1–4, GA7 and GA27.

If any impact on an artefact is anticipated, then it would be repositioned away from areas of potential impact. This would be undertaken by an archaeologist and representatives of the local Aboriginal community.

## **12.7 Operational impacts and mitigation measures**

---

### **12.7.1 Impact assessment**

In general, potential impacts would have been addressed during or prior to construction of the Project and there would be no impacts – or very minimal impacts – on heritage items during operation of the Project.

There is the potential for the increased flow regimes in Googong Creek to affect the geomorphology of the creek bed and, as a result, expose or otherwise affect any indigenous artefacts that may be present. The risk of these potential impacts is considered minimal, due to the findings of heritage studies in the area and the stormwater management measures that would be put in place to regulate flows leaving the site at Googong Dam Road.

### **12.7.2 Management and mitigation measures**

Periodic inspections of the Googong Creek corridor would be undertaken to identify if potential geomorphological changes to the creekline are likely.

## **12.8 Conclusion**

---

An indigenous and non-indigenous heritage assessment and consultation process has been undertaken and indicates that six previously identified indigenous heritage items are located near proposed construction areas. These would be avoided or addressed prior to construction, in accordance with the recommendations contained in the specialist heritage report (Appendix G).

There would be no operational impacts – or very minimal impacts – on heritage items.

Mitigation and management measures are reinforced in the statement of commitments (S1–S6, G7, H1–H2 and NH1–NH3) in Chapter 18.