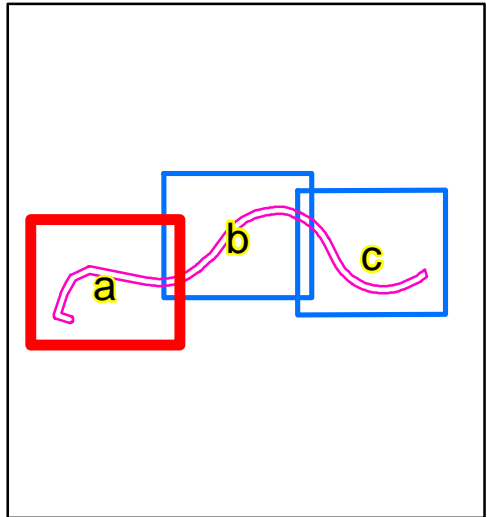


Appendix I Excerpt – Biosis Weed and Pest Management Strategy (September 2012)

1. Figure 2a: Weed Occurrence



Legend

- Subject Site
- Study Area
- Weed Occurrence
 - High weed infestation
 - Moderate/scattered weed infestation
 - Low or no weed infestation

Figure 2a: Weed Occurrence

0 20 40 60 80 100
 Metres
 Scale: 1:2,500 @ A3
 Coordinate System: GDA 1994 MGA Zone 55

Biosis Research Pty. Ltd.
 38 Bertie Street
 (PO Box 489)
 Port Melbourne
 VICTORIA 3207
 Offices also in: Ballarat, Sydney, Wollongong,
 Canberra, Wangaratta & Brisbane



Acknowledgements: Nearmap (c) 2012

Matter: 15015
 Date: 26 July 2012,
 Checked by: SMV, Drawn by: PMA
 Location: P:\15000s\15015\Mapping\15015_Figure4_West.mxd